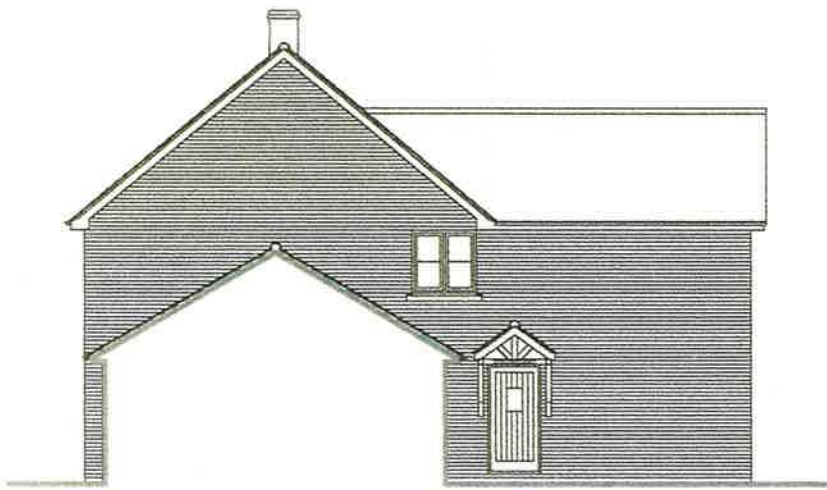
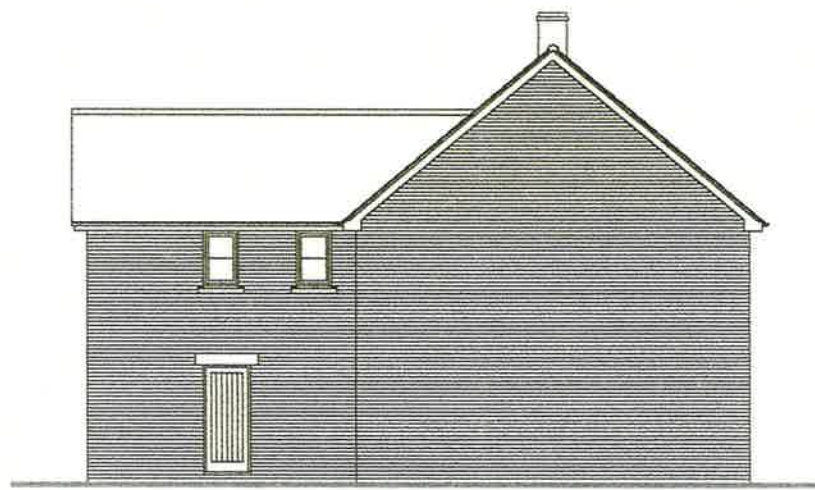


RECEIVED

03 JAN 2018



PLOT 1 SOUTH-EAST (SIDE) ELEVATION



PLOT 2 NORTH-WEST (SIDE) ELEVATION

PROPOSED EXTERNAL MATERIALS

EXTERNAL WALLS TO BE GOOD QUALITY MIXED RED FACING BRICK TO BE SELECTED AND APPROVED LAD 'STRETCHER BOND' IN LIMB MORTAR WITH SLIGHTLY RECESSED WEATHORED POINTING.

ASHLAR STONE FACED LINTELS OVER HEADS OF EXTERNAL OPENINGS WHERE INDICATED.

ASHLAR STONE FACED WINDOW SUB-CILLS.

NATURAL SLATE ROOF COVERING COLOUR TO BE SELECTED AND APPROVED, WITH MATCHING CONCRETE HALF-ROUND RIDGE TILES.

WINDOWS AND EXTERNAL DOORS TO BE PVCU COMPONENTS COLOUR 'GREY' EXTERNALLY AND 'WHITE' INTERNALLY WITH WOODGRAIN EXTERNAL SURFACE TEXTURE, DOUBLE GLAZED WITH CLEAR/DRYCLIME SEALED DOUBLE GLASS UNITS USING LOW-E GLASS WITH TOUGHENED GLASS WHERE REQUIRED.

CELLULAR PVC ROOF FASCIAS AND SOFFITS COLOUR 'GREY' WITH WOODGRAIN SURFACE TEXTURE.

RAINWATER GOODS TO BE BRETT MARTIN OR EQUAL APPROVED, 'CASCADE' HEAVY PLASTIC SIMULATED CAST IRON RAINWATER GOODS AND FITTINGS, COLOUR 'CLASSIC BLACK'.

Client		
FRANCIS BANFIELD		
Project		
PROPOSED DWELLINGS on land adjoining CHURCH FARM, 16 MAIN STREET, KEEVIL, TROWBRIDGE, WILTSHIRE BA14 4LP		
Drawing No.		
DESIGN DRAWING ELEVATIONS 'PLOT 1'		
Date	Rev	Drawn by
21.06.2017	NOV 2017	
Tim Weeding Building Design Services		
19 Hill Road Bathwick Bath BA2 1UP	Telephone: 01225 452000 Fax: 01225 452001	
Project Number	Drawing Number	
2017-60	05	



SCALE 1/200 WHEN PLOTTED AT A1 SIZE
SCALE 1/100 WHEN PLOTTED AT A3 SIZE