

RECEIVED
03 JAN 2018



SOUTH-WEST (REAR) ELEVATION

PROPOSED EXTERNAL MATERIALS

EXTERNAL WALLS TO BE GOOD QUALITY WHEAT RED FACING BRICK TO BE SELECTED AND APPROVED LAD 'STRETCHER BOND' IN LIME MORTAR WITH SLIGHTLY RECESSED HEATHERED POINTING.

ASHLAR STONE FACED LINTELS OVER HEADS OF EXTERNAL OPENINGS WHERE INDICATED.

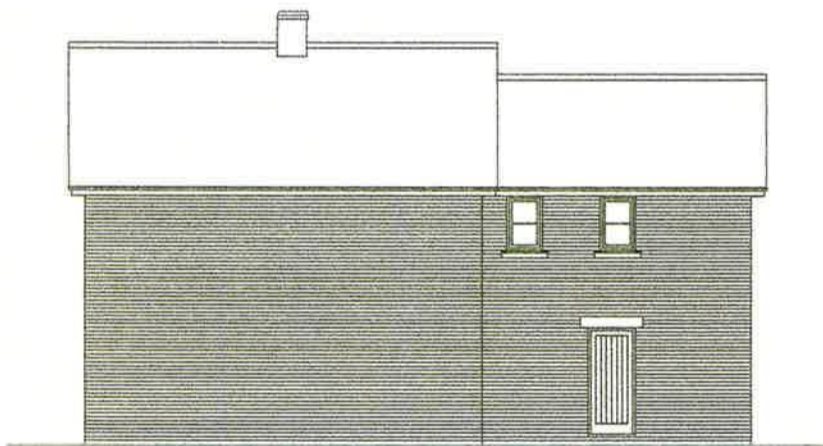
ASHLAR STONE FACED WINDOW SUB-OILS.

NATURAL SLATE ROOF COVERING. COLOUR TO BE SELECTED AND APPROVED, WITH MATCHING CONCRETE HALF-ROUND RIDGE TILES.

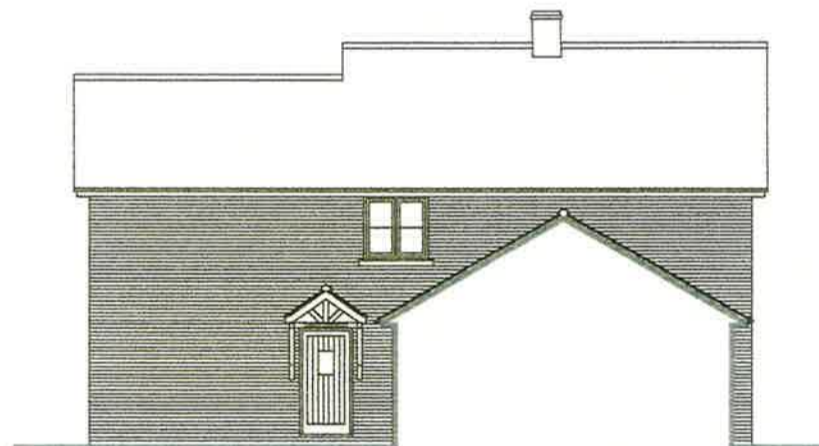
WINDOWS AND EXTERNAL DOORS TO BE PVCU COMPONENTS COLOUR 'GREY' EXTERNALLY AND 'WHITE' INTERNALLY WITH WOODGRAIN EXTERNAL SURFACE TEXTURE. DOUBLE GLAZED WITH CLEAR/OPAQUE SEALED DOUBLE GLASS UNITS USING LOW-E GLASS WITH TOUGHENED GLASS WHERE REQUIRED.

CELLULAR PVC ROOF FASCIAE AND SOFFITS COLOUR 'GREY' WITH WOODGRAIN SURFACE TEXTURE.

RAINWATER GOODS TO BE BRETT WARTH, OR EQUAL APPROVED. 'CASCADE' HEAVY PLASTIC SIMULATED CAST IRON RAINWATER GOODS AND FITTINGS, COLOUR 'CLASSIC BLACK'.



PLOT 1 SOUTH-EAST (SIDE) ELEVATION



PLOT 1 NORTH-EAST (SIDE) ELEVATION

SCALE 1/250 WHEN PLOTTED AT A1 SIZE
SCALE 1/100 WHEN PLOTTED AT A3 SIZE

Drawn		
FRANCO BANFIELD		
Project		
PROPOSED DWELLING ON LAND ADJOINING CHURCH FARM, 10 MAIN STREET, KEEVIL, TROWBRIDGE, WILTSHIRE BA14 6LJ		
Drawing Title		
DESIGN DRAWING ELEVATIONS SHEET 2		
Date	Rev	Drawn by
21 DECEMBER	NOV 2017	FRANCO
Client		
Tun Wooding Building Design Services 25 Mt. View Barnes London W14 9PF Tel: 020 8996 7800		
Project Number	Drawing Number	
2017-80	104	