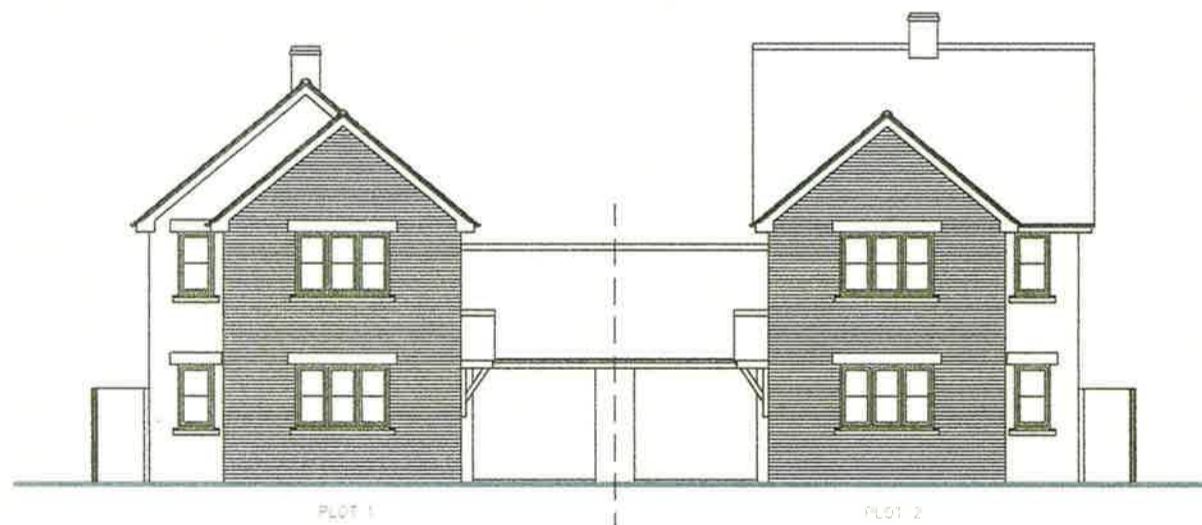


RECEIVED
03 JAN 2018



STREET ELEVATION FROM MAIN STREET



NORTH-EAST (FRONT) ELEVATION

PROPOSED EXTERNAL MATERIALS
 EXTERNAL WALLS TO BE GOOD QUALITY BRICK RED FACING BRICK TO BE SELECTED AND APPROVED LIME 'STRETCHER BOND' IN LIME MORTAR WITH SLIGHTLY RECESSED WEATHERED POINTING.
 ASHLAR STONE FACED LINTELS OVER HEADS OF EXTERNAL OPENINGS WHERE INDICATED.
 ASHLAR STONE FACED WINDOW SUB-CILLS.
 NATURAL SLATE ROOF COVERING, COLOUR TO BE SELECTED AND APPROVED, WITH MATCHING CONCRETE HALF-ROUND RIDGE TILES.
 WINDOWS AND EXTERNAL DOORS TO BE PVC COMPONENTS COLOUR 'GREY' EXTERNALLY AND 'WHITE' INTERNALLY WITH WOODGRAIN EXTERNAL SURFACE TEXTURE, DOUBLE GLAZED WITH CLEAR/OBSOURE SEALED DOUBLE GLASS UNITS USING LOW-E GLASS WITH TOUGHENED GLASS WHERE REQUIRED.
 CELLULAR PVC ROOF FASCIAE AND SOFFITS COLOUR 'GREY' WITH WOODGRAIN SURFACE TEXTURE.
 RAINWATER GOODS TO BE BRETT MAXTRIM, OR EQUAL APPROVED, 'CASCADE' HEAVY PLASTIC SIMULATED CAST IRON RAINWATER GOODS AND FITTINGS, COLOUR 'CLASSIC BLACK'.

Client		
FRANCOIS BANFIELD		
Project		
PROPOSED DWELLINGS on land adjoining CHURCH FARM, 16 MAIN STREET, KEEVIL, TROWBRIDGE, WILTSHIRE BA14 8LD		
Drawing Title		
DESIGN DRAWING ELEVATIONS - SHEET 1		
Date	Drawn by	
AS INDICATED	WJW-jwt	
Tin Weeding Building Design Services		
24 Hill Road Bristol Bristol BS2 0JP	Telephone & Fax (01274) 750071	
Project Number	Drawing Number	
2017-00	03	

SCALE 1/50 WHEN PLOTTED AT A1 SIZE
 SCALE 1/100 WHEN PLOTTED AT A2 SIZE

RECEIVED
03 JAN 2018