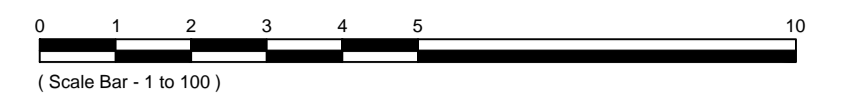
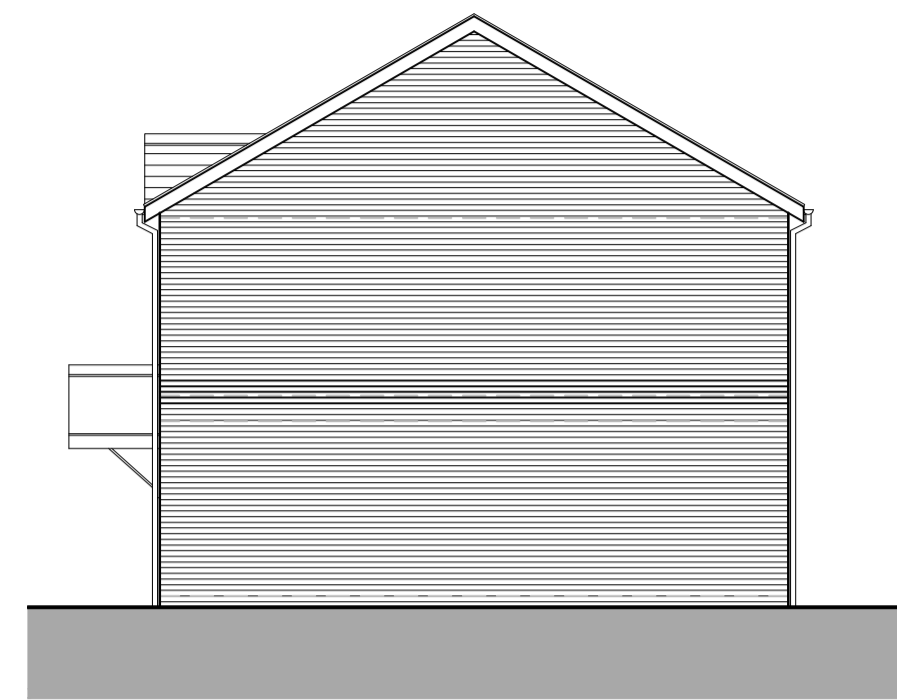


Salisbury Plain - Type D 7P (Larkhill)

GENERAL NOTES DO NOT SCALE



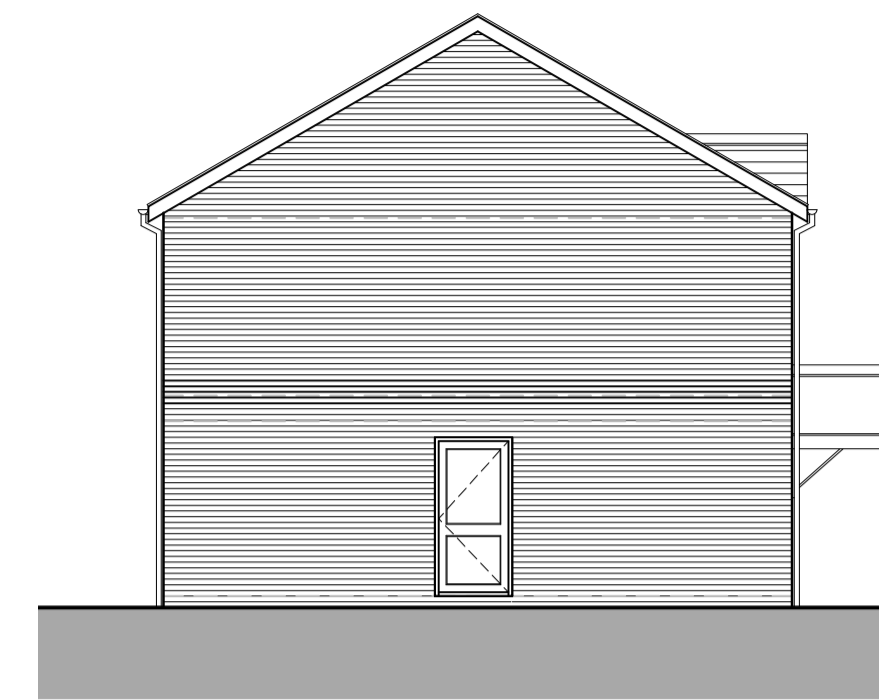
Front Elevation



Side Elevation



Rear Elevation



Side Elevation

Brickwork with Feature Banding

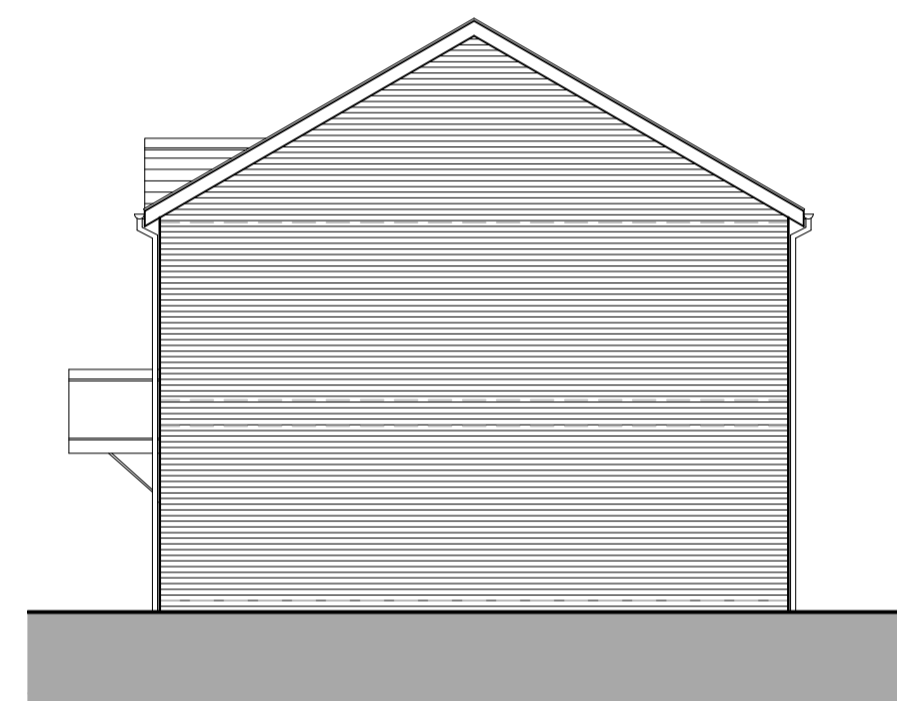
Materials

Roof / Walls - Refer to finishes layout and schedule
Cills/ Heads Front & Side - Cills reconstituted Stone. Heads N/A
Cills/ Heads Rear - N/A
Porch - Refer to finished schedule
Verge - White UPVc - 200mm deep
Fascia - White UPVc - 200mm deep

Soffit - White UPVc - 200mm deep
Rainwater Goods - UPVc with 1/2 round gutters - colour black
Windows - White UPVc
Doors - Front IG XNG02 - Rear IG XNG01



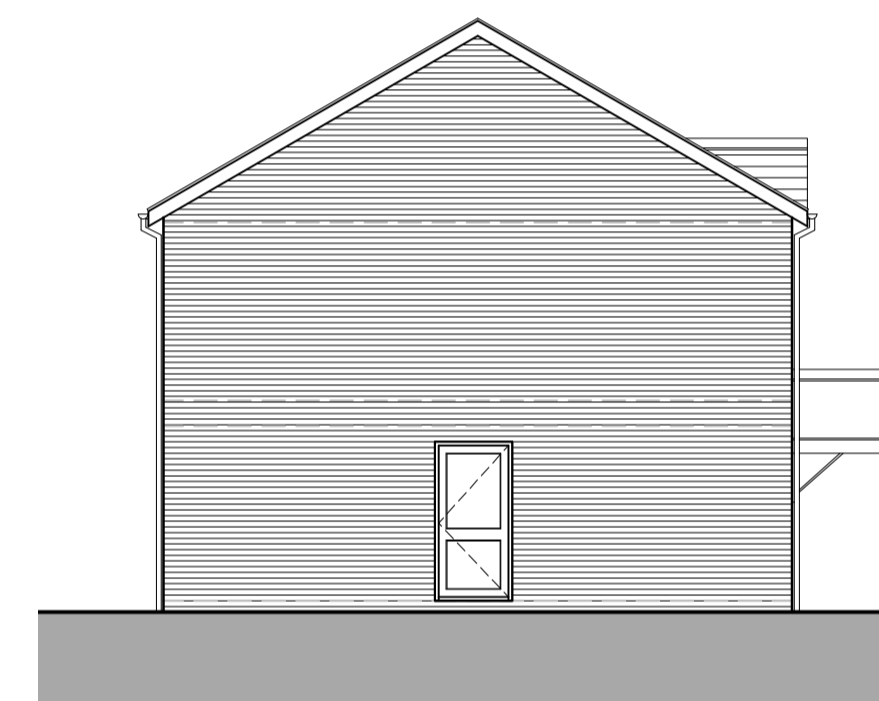
Front Elevation



Side Elevation



Rear Elevation



Side Elevation

Brickwork

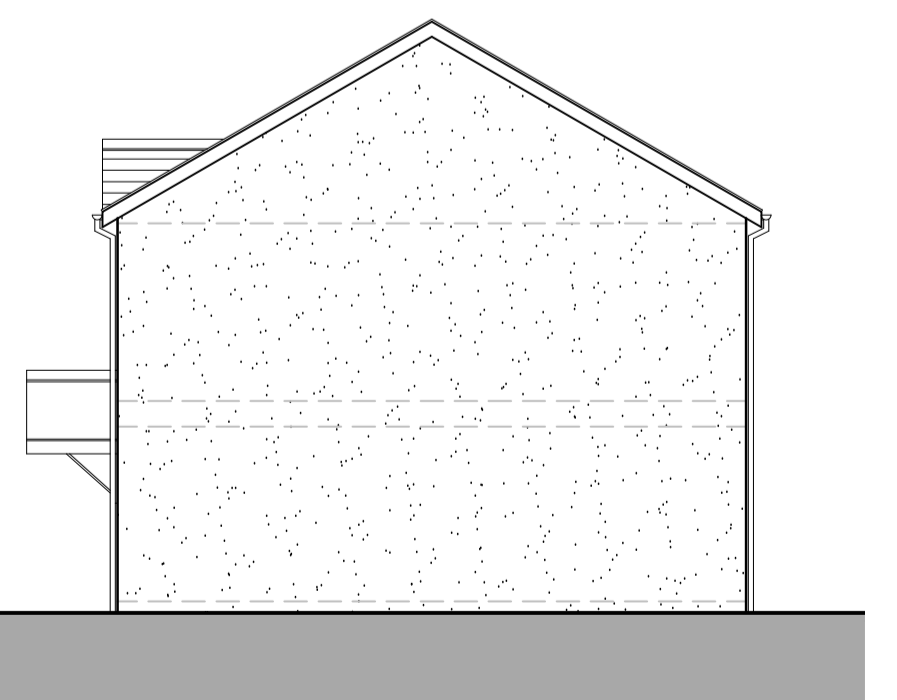
Materials

Roof / Walls - Refer to finishes layout and schedule
Cills/ Heads Front & Side - Cills reconstituted Stone. Heads N/A
Cills/ Heads Rear - N/A
Porch - Refer to finished schedule
Verge - White UPVc - 200mm deep
Fascia - White UPVc - 200mm deep

Soffit - White UPVc - 200mm deep
Rainwater Goods - UPVc with 1/2 round gutters - colour black
Windows - White UPVc
Doors - Front IG XNG02 - Rear IG XNG01



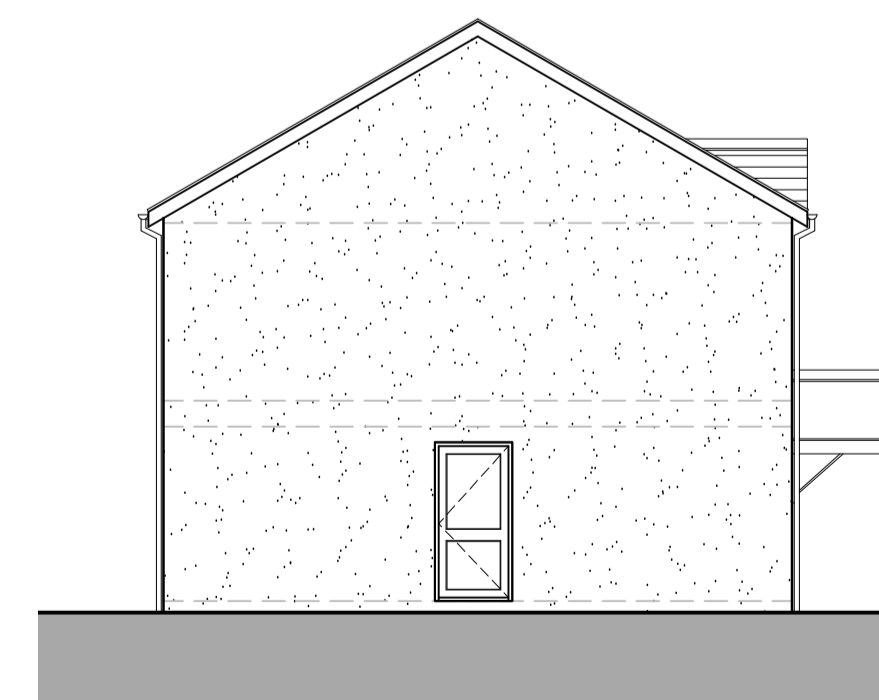
Front Elevation



Side Elevation



Rear Elevation



Side Elevation

Render

Materials

Roof / Walls - Refer to finishes layout and schedule
Cills/ Heads Front & Side - Cills reconstituted Stone. Heads N/A
Cills/ Heads Rear - N/A
Porch - Refer to finished schedule
Verge - White UPVc - 200mm deep
Fascia - White UPVc - 200mm deep

Soffit - White UPVc - 200mm deep
Rainwater Goods - UPVc with 1/2 round gutters - colour black
Windows - White UPVc
Doors - Front IG XNG02 - Rear IG XNG01

TO BE READ IN CONJUNCTION WITH

ISSUE	REVISION	DATE	BY	CHK
SCALE	1:100 @ A1			
DATE	12.12.17	DRG NUMBER	P255	
DRAWN	LBB	FLOOR AREA	As Shown	
CHECK	PB			

TITLE
Type D 7P - Elevation Treatments

PROJECT
Salisbury Plain



UNIT E, PINWOOD, BELL HEATH WAY
 WOODGATE BUSINESS PARK,
 WOODGATE VALLEY, BIRMINGHAM, B32 3BZ
 TEL (0121) 421 8300 FAX (0121) 421 8210
 © LOVELL PARTNERSHIPS LIMITED 2016