

DETAIL 1.1
TYPICAL MANHOLE DETAIL - TYPE 1A
Depth from cover level to soffit of pipe 3 m to 6 m

MANHOLE NOTES

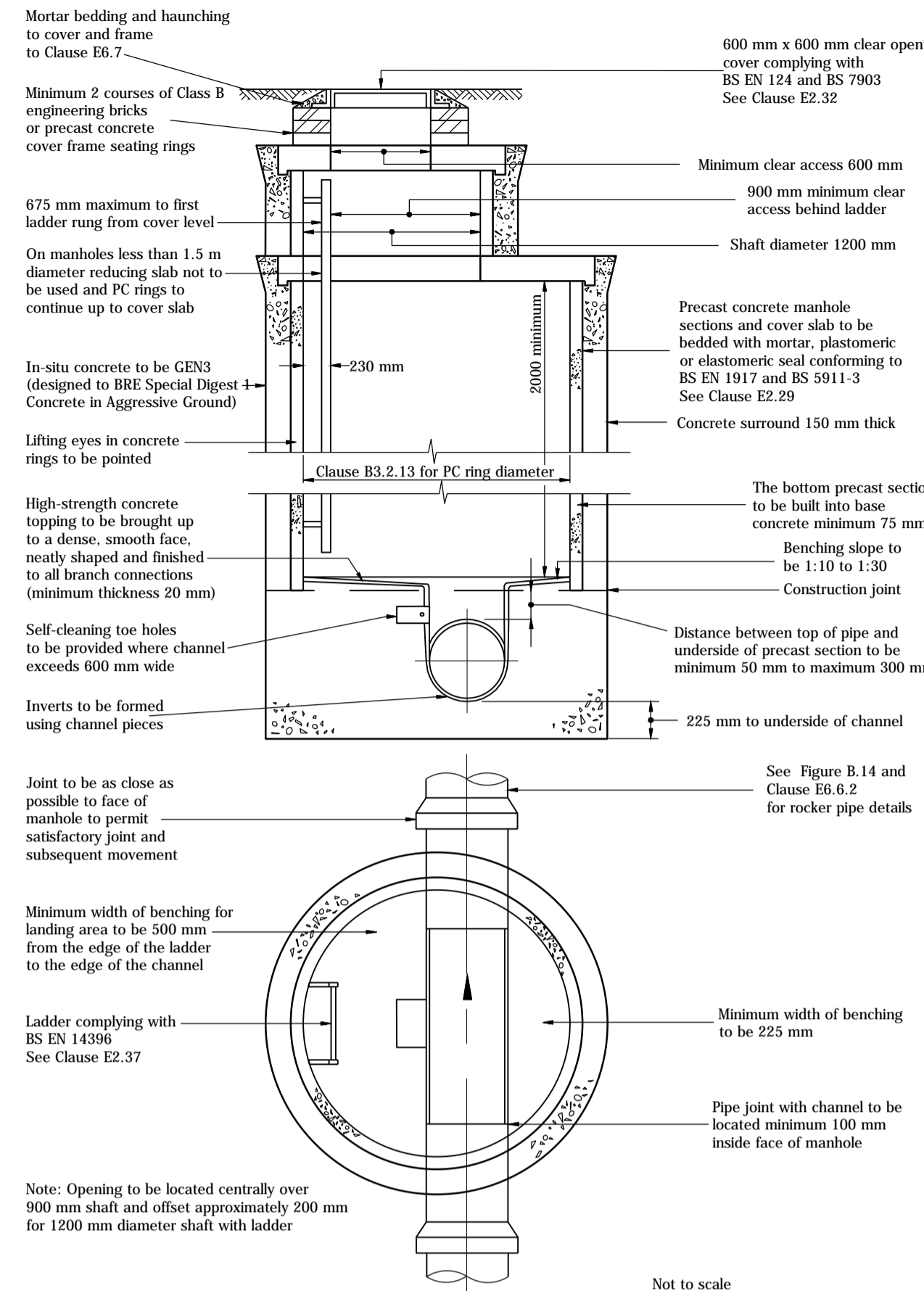
- Access cover grades (depth of frame to suit location and highway category).
BS EN 124
CLASS B 400 - Carriageway and parking areas
CLASS B 125 - Footways etc
- Access covers for type a and b manholes to have a minimum clear opening of 675mm sq.
- Permissible chamber diameters for manhole types A and B.

DIAMETER OF LARGEST PIPE IN MANHOLE (mm)	CHAMBER SECTION DIAMETER (mm)
LESS THAN 375	1200
375 - 700	1500
750 - 900	1800
Greater than 900	Pipe diameter + 900

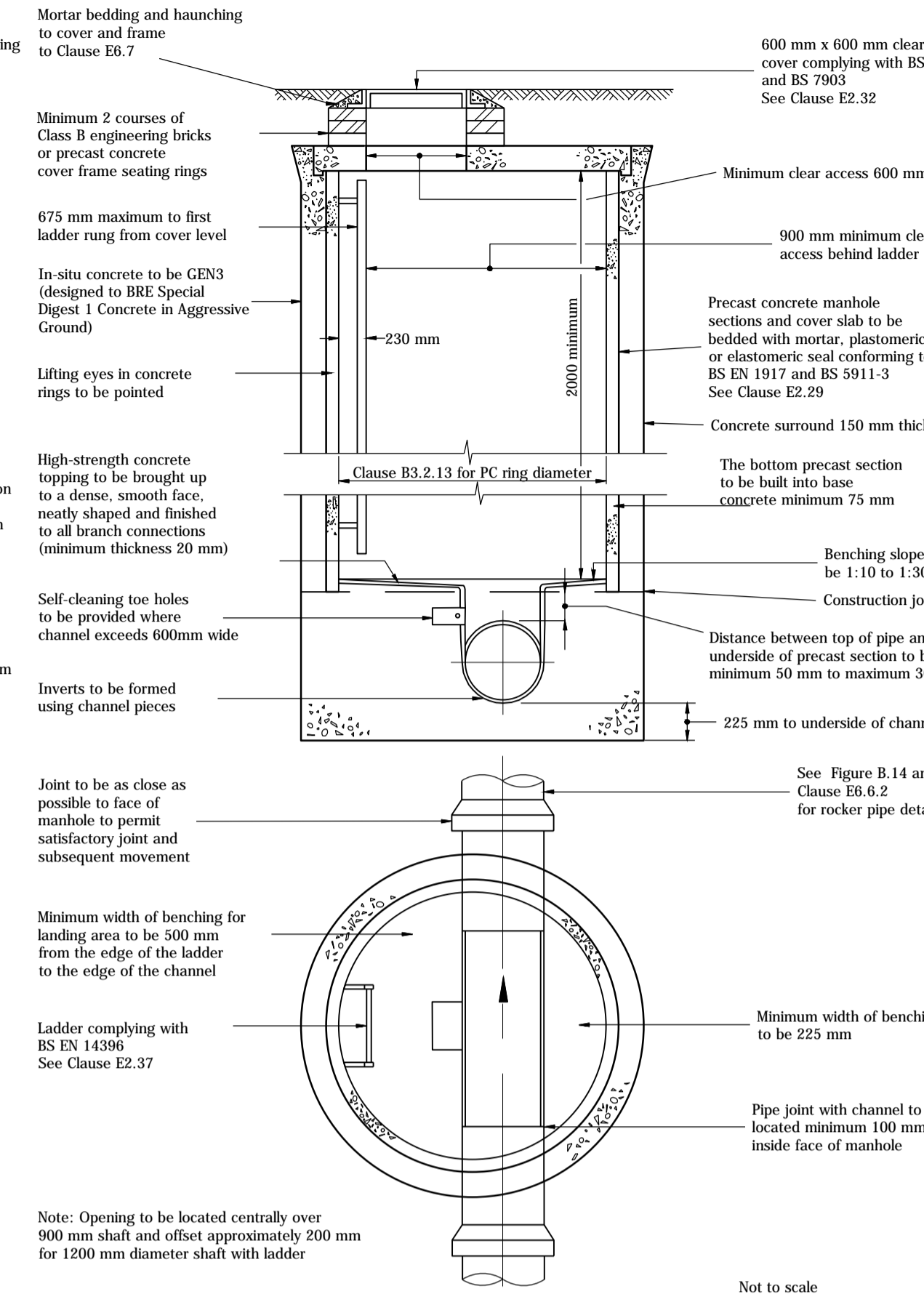
- Pipes built into manholes shall have a flexible joint as close as feasible to the external face of the structure and the length of the next rocker pipe shall be as shown.

NOMINAL DIAMETER (mm)	EFFECTIVE LENGTH (m)
150 - 600	0.60
601 - 750	1.00
OVER 750	1.25

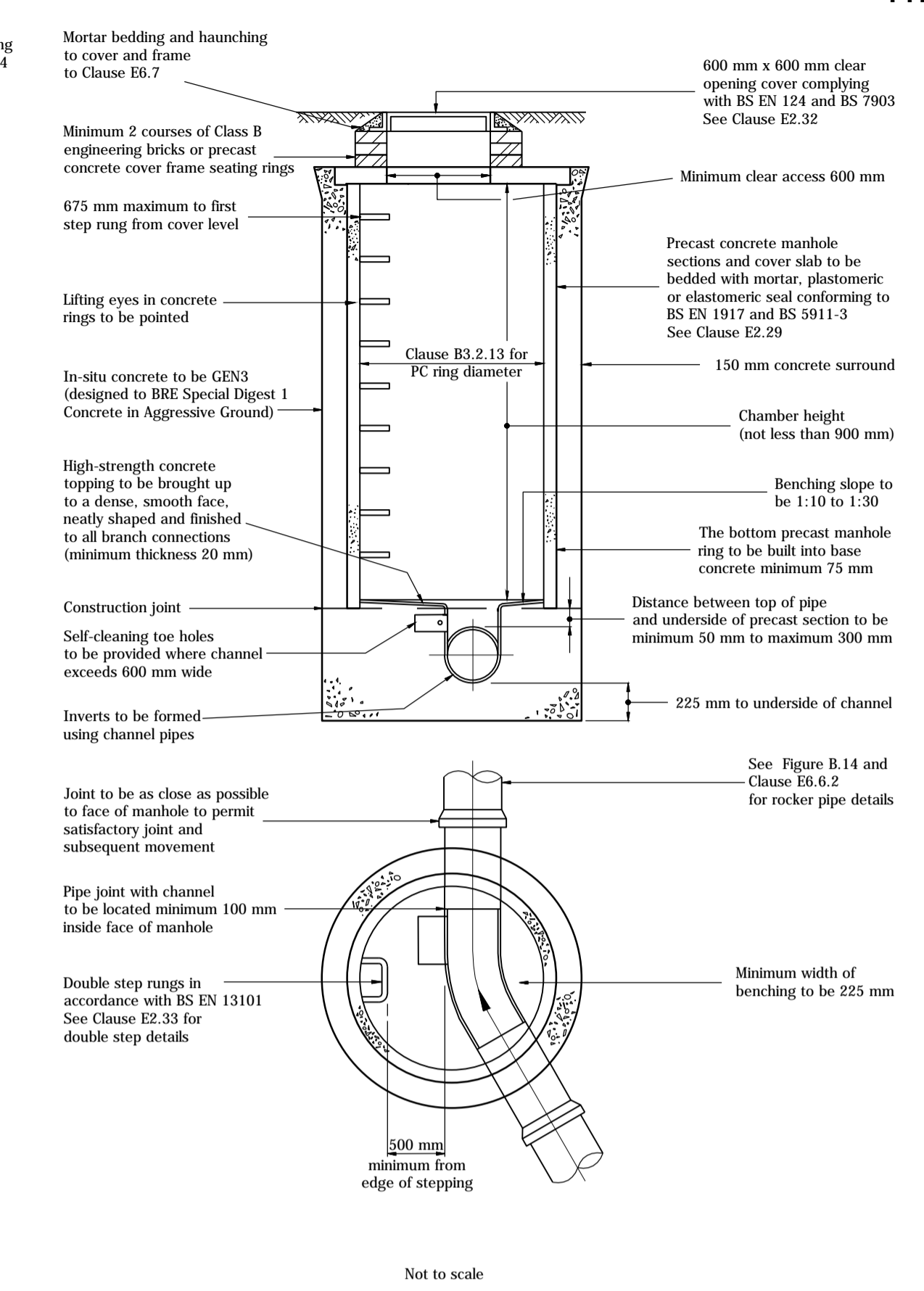
- All pipes entering at the bottom of the manhole to have same soffit level.
- The channel may be performed half round channel.
- Where a future connection is shown in the manhole schedule the pipe shall be supplied with a stopped.
- Manholes with outgoing pipes greater than or equal to 600mm dia shall have hooks fitted for removable safety chain.
- Reduction shaft is optional for manholes greater than 3.0m depth. reduction shaft only on manholes 1800 or greater diameter.
- Ladders shall be either stainless steel or grp. ladders to be stainless.
- Step rungs shall be double polypropylene encapsulated.
- All in-situ concrete to have 50-75mm slump and to be vibrated to form dense watertight seal with precast sections.
- Benching to be c28/35 or granolithic to form dense smooth finish.
- In-fill covers of any type shall not be used, where cover is located in an area of block paving the frame shall be 150mm deep.
- Frames for manhole covers shall be bedded in a polyester resin bedding mortar in all situations where covers are sited in NRSWA road categories 1, 2 or 3.
- Double rung step irons also acceptable.
- Access opening to be located centrally over 900mm shaft, and offset approx 200mm for 1200mm shaft with rungs/ladder.



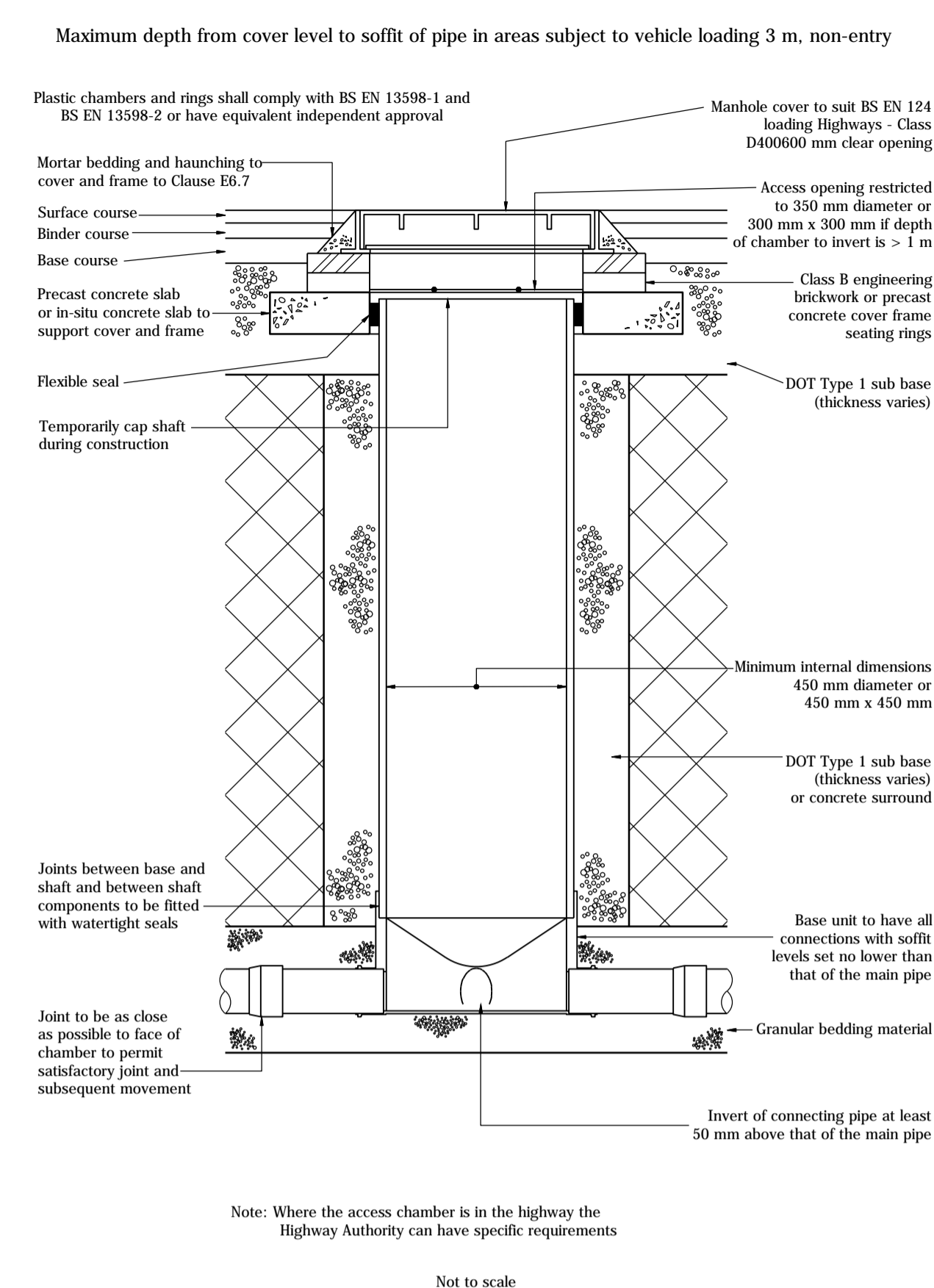
DETAIL 1.2
TYPICAL MANHOLE DETAIL - TYPE 1B
Depth from cover level to soffit of pipe 3 m to 6 m



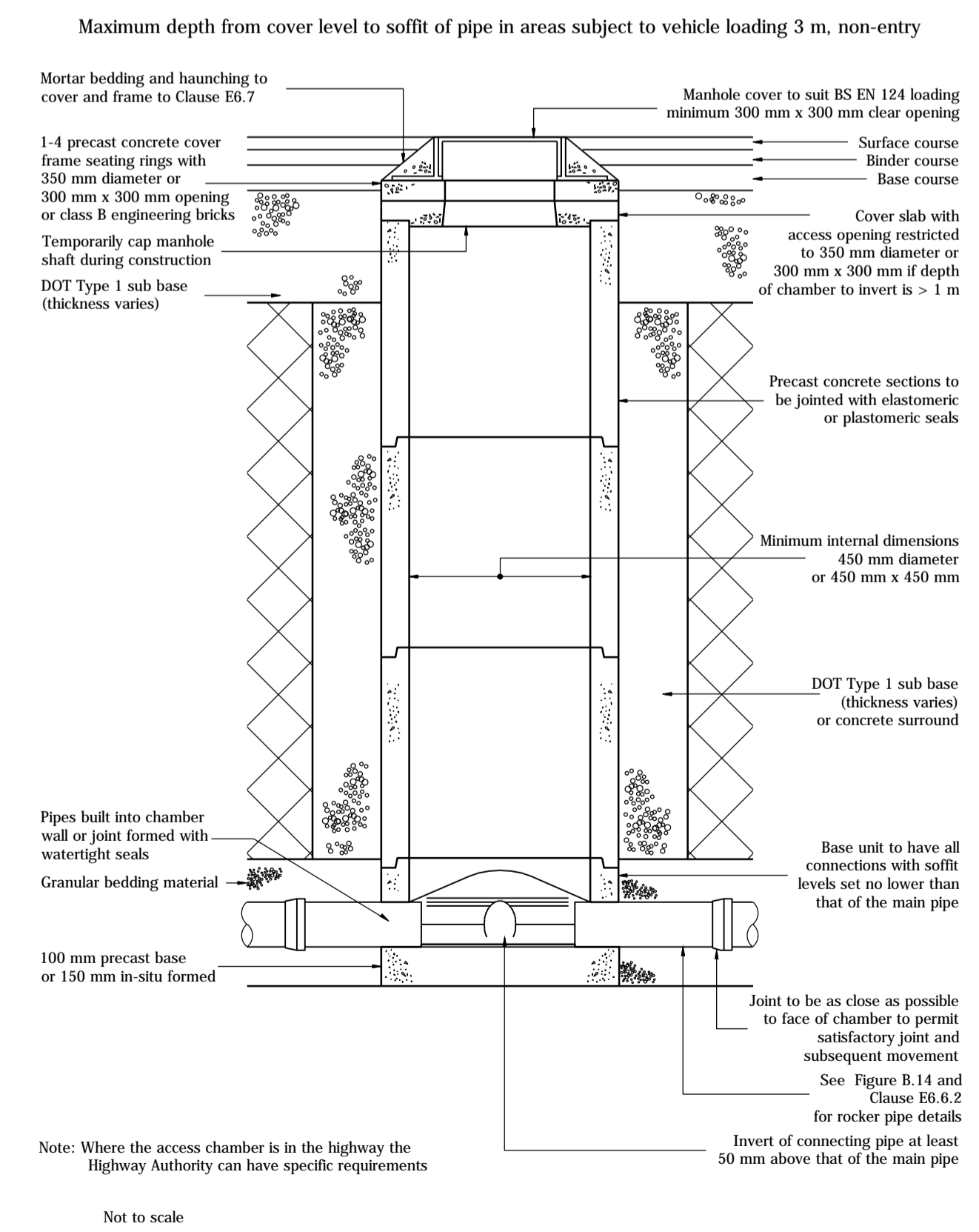
DETAIL 1.3
TYPICAL MANHOLE DETAIL - TYPE 2
Maximum depth from cover level to soffit of pipe 3.0 m



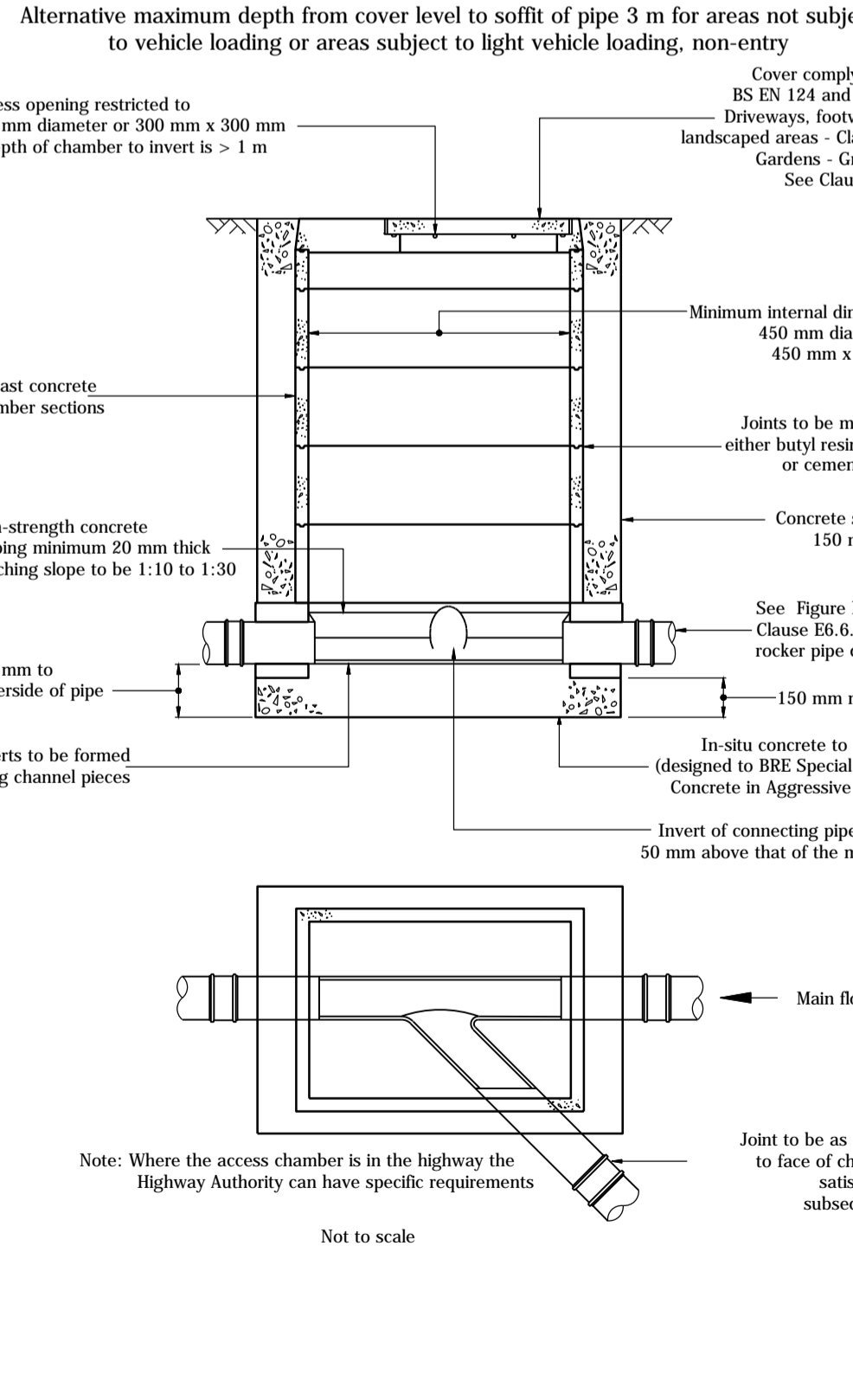
DETAIL 1.4
TYPICAL INSPECTION CHAMBER DETAIL - TYPE 3 (Flexible material detail)



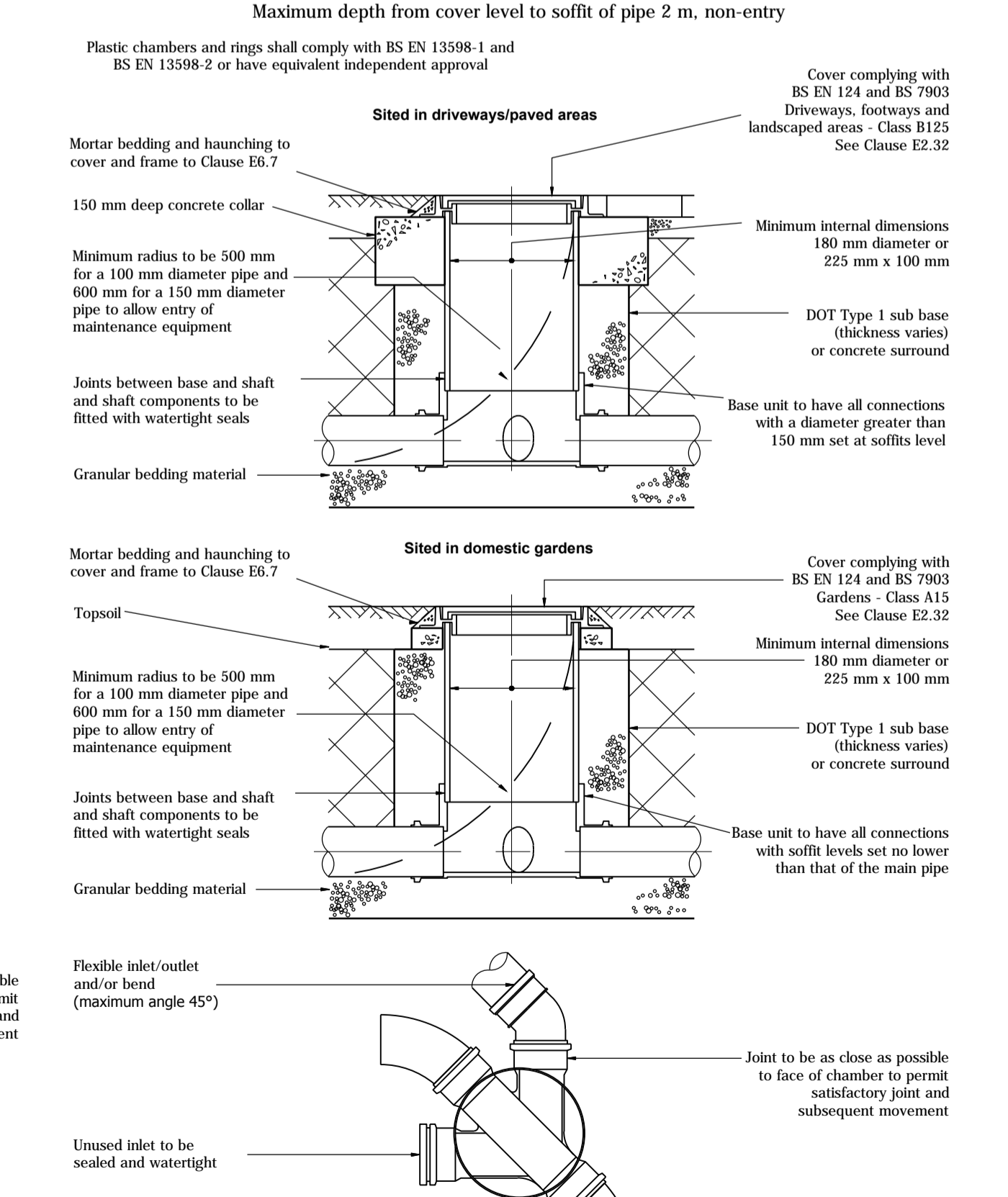
DETAIL 1.5
TYPICAL INSPECTION CHAMBER DETAIL - TYPE 3 (Rigid material detail)



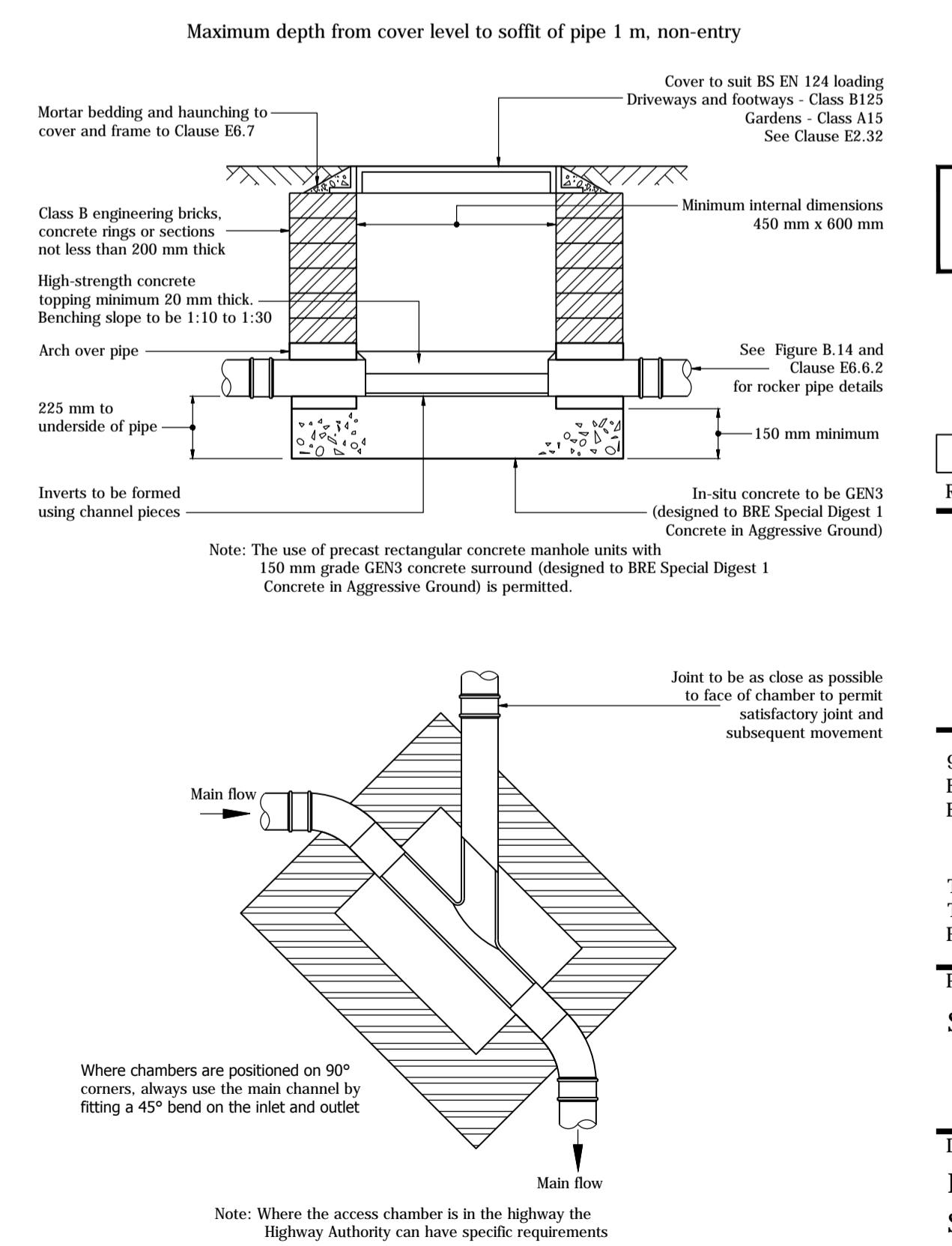
DETAIL 1.6
TYPICAL INSPECTION CHAMBER DETAIL - TYPE 3 (Rigid material detail)



DETAIL 1.7
TYPICAL INSPECTION CHAMBER DETAIL - TYPE 4 (Flexible material detail)



DETAIL 1.8
TYPICAL INSPECTION CHAMBER DETAIL - TYPE 4 (Rigid material detail)



PRELIMINARY ISSUE

PI	FIRST ISSUE	DCF	AP	ACP	16.10.17
REV	DESCRIPTION	BY	CHK	APP	DATE



90 VICTORIA STREET
BRISTOL
BS1 6DP

Tel.WYG: +44 (0) 117 925 4393
Tel.SBA: +44 (0) 117 311 6387
FAX: +44 (0) 117 925 4239

Project:
SPTA SFA LARKHILL

Drawing Title:
DRAINAGE DETAILS
SHEET 1

Scale @	A1	Drawn	Date	Checked	Date	Approved	Date
NTS	DCF	12.10.17	AP	12.10.17	ACP	12.10.17	
Project No.	Office	Type	Drawing No.	Revision			
A100941-3	28	C	1851	P1			