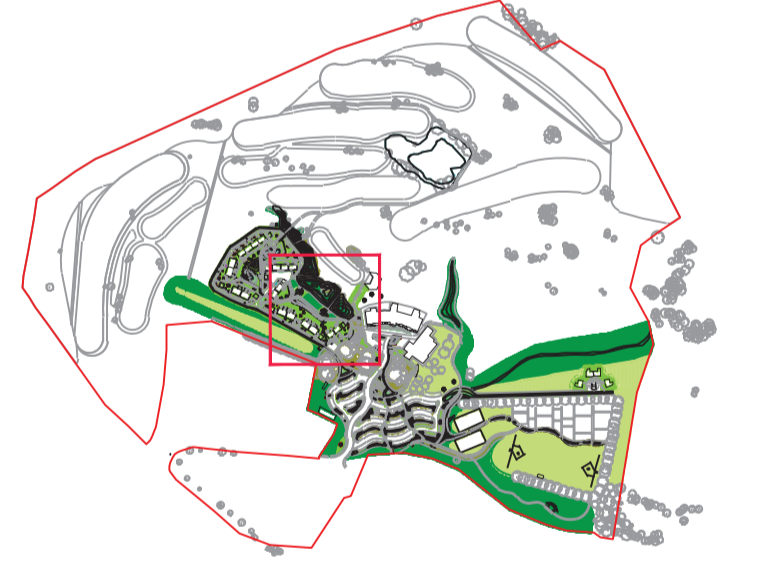


Refer to drawings 077-208 to 077-211 for planting proposals in the wider landscape

KEY:

- Proposed contour
- Existing tree to be retained
- Proposed trees**
- Legacy trees**
- Cb *Carpinus betulus* 20-25cm girth, c/s at 2.0m high
- FSP *Fagus sylvatica* 'Purpurea' 20-25cm girth, c/s at 2.0m high
- Ps *Pinus sylvestris* 20-25cm girth, c/s at 2.0m high
- Qr *Quercus robur* 20-25cm girth, c/s at 2.0m high
- Wetland trees**
- Ag *Alnus glutinosa* 18-20cm girth, c/s at 1.8m high
- Pn *Populus nigra* 16-18cm girth, c/s at 1.8m high
- Pt *Populus tremula* 16-18cm girth, c/s at 1.8m high
- Sa *Salix alba* 18-20cm girth, c/s at 1.8m high
- Infrastructure trees**
- Ac *Acer campestre* 20-25cm girth, c/s height to suit location (min. 2.2m high near roads)
- MT *Malus 'Tschonoskii'* 20-25cm girth, c/s height to suit location (min. 2.2m high near roads)
- Sau *Sorbus aucuparia* 18-20cm girth, c/s height to suit location (min. 2.2m high near roads)
- Te *Tilia x europaea* 18-20cm girth, c/s height to suit location (min. 2.2m high near roads)
- Multi-stemmed trees**
- Al *Amelanchier lamarckii* 2.0-2.5m high, m/s
- Bn *Betula nigra* 3.0-3.5m high, m/s
- Ca *Corylus avellana* 3.0-3.5m high, m/s
- Prs *Prunus serotina* 2.0-2.5m high, m/s
- Communal fruit trees**
- MdBB *Malus domestica* 'Bedwyn Beauty' } standard, 4.0-5.5m high
- MdBS *Malus domestica* 'Bum's Seedling' } standard, 4.0-5.5m high
- MdDF *Malus domestica* 'Dredge's Fame' } standard, 4.0-5.5m high
- MdR *Malus domestica* 'Roundway Magnum Bonum' } standard, 4.0-5.5m high
- Existing woodland to be retained**
- Native woodland planting**
70% tree species, 30% shrub species
Planted at a density of 1No. per m², in groups of 3 or 5No. by species
- Trees:**
- 10% *Acer campestre* 120/150cm
- 10% *Alnus glutinosa* 60/90cm
- 5% *Betula pendula* 120/150cm
- 5% *Crataegus monogyna* 90/120cm
- 10% *Fagus sylvatica* 120/150cm
- 5% *Prunus avium* 60/90cm
- 5% *Prunus padus* 120/150cm
- 20% *Quercus robur* 120/150cm
- Shrubs:**
- 5% *Ilex aquifolium* 3L
- 4% *Ligustrum vulgare* 60/90cm
- 5% *Malus sylvestris* 60/90cm
- 2% *Prunus spinosa* 60/90cm
- 4% *Rosa arvensis* 60/90cm
- 6% *Taxus baccata* 5L
- 4% *Viburnum opulus* 60/90cm
- Bulbs**
Planted in groups of 50No.
- Galanthus nivalis* 15cm high, 4/5cm bulb size
- Narcissus pseudonarcissus* 40cm high, 12/14cm bulb size
- Native woodland edge planting**
30% tree species, 70% shrub species
Planted at a density of 1No. per m², in groups of 3 or 5No. by species
- Trees:**
- 6% *Acer campestre* 90/120cm
- 9% *Corylus avellana* 120/150cm
- 6% *Ilex aquifolium* 3L
- 9% *Quercus robur* 90/120cm
- Shrubs:**
- 12% *Crataegus monogyna* 90/120cm
- 8% *Euonymus europaeus* 120/150cm
- 8% *Ligustrum vulgare* 60/90cm
- 8% *Lonicera periclymenum* 60/90cm
- 12% *Rosa arvensis* 60/90cm
- 10% *Sambucus nigra* 3L
- 12% *Viburnum opulus* 60/90cm
- Bulbs**
Planted in groups of 50No. towards front of beds
- Galanthus nivalis* 15cm high, 4/5cm bulb size
- Narcissus pseudonarcissus* 40cm high, 12/14cm bulb size
- Native woodland ground cover**
Planted at a density of 1No. per m², in groups of 9-15No. by species:
- 20% *Asplenium scolopendrium* 3L
- 20% *Dryopteris filix-mas* 2L
- 15% *Liriope muscari* 1.5L
- 10% *Luzula sylvatica* 1.5L
- 20% *Salvia officinalis* 1.5L
- 15% *Vinca minor* 1.5L
- Bulbs**
Planted in groups of 50No.
- Galanthus nivalis* 15cm high, 4/5cm bulb size
- Narcissus pseudonarcissus* 40cm high, 12/14cm bulb size
- Existing amenity grass to be retained**
- Amenity grass**
Rolawn Medallion or similar equal and approved
- Wildflower grassland**
Emorsgate EM4
- Marginal planting**
Planted at a density of 1No. per m², in groups of 7 or 9No. by species
- Carex riparia* P9
- Caltha palustris* P9
- Iris pseudacorus* P9
- Iris versicolor* P9
- Mentha aquatica* P9
- Myosotis scorpioides* P9
- Lychnis flas-cuculi* 'White Robin' P9
- Lythrum salicaria* P9
- Ranunculus flammula* P9
- Aquatic planting**
Planted at a density of 1No. per m², in groups of 7 or 9No. by species
- Seeded with Emorsgate EP1 pond edge mixture at a rate of 4gms per m²
- Menyanthes trifoliata* P9
- Myosotis scorpioides* P9
- Potamogeton polygonifolius* P9
- Sagittaria sagittifolia* P9
- Ornamental planting in gravel beds**
Planted at a density of 1No. per 3m², in groups of 3 or 5No. by species
- 20% *Anethum graveolens* 2L
- 10% *Carex riparia* 1L
- 15% *Foeniculum vulgare* 2L
- 10% *Iris pseudacorus* 1L
- 10% *Iris versicolor* 1L
- 15% *Luzula sylvatica* 1.5L
- 10% *Lychnis flas-cuculi* 2L
- 10% *Persicaria bistorta* 2L
- Ornamental planting**
Planted at a density of 4No. per m², in groups of 3 or 5No. by species
- Type A: with edibles**
- 10% *Foeniculum vulgare* 2L
- 15% *Miscanthus sinensis* 'Ferner Osten' 2L
- 15% *Pachysandra terminalis* 'Green Carpet' 1.5L
- 15% *Ribes rubrum* 'Jonkheer van Tets' 3L
- 15% *Rosmarinus officinalis* 3L
- 10% *Rumex sanguineus* 2L
- 10% *Salvia nemorosa* 'Caradonna' 3L
- 5% *Thymus citriodorus* 2L
- 5% *Thymus 'Fragrantissimus'* 2L
- Bulbs**
Planted in groups of 50No.
- Allium 'Globemaster'* 120cm high, 18/20cm bulb size
- Allium sphaerocephalum* 60cm high, 6cm bulb size
- Type B (without edibles)**
- 5% *Astilbe chinensis* 2L
- 10% *Echinacea purpurea* 'Purple Emperor' 2L
- 10% *Eupatorium purpureum* 2L
- 5% *Miscanthus sinensis* 'Ferner Osten' 2L
- 10% *Pennisetum alopecuroides* 'Hamel' 2L
- 10% *Phlomis russeliana* 2L
- 10% *Rosmarinus officinalis* 3L
- 5% *Rudbeckia hirta* 'Indian Summer' 2L
- 10% *Sanguisorba officinalis* 3L
- 15% *Stipa tenuissima* 2L
- 10% *Vinca minor* 'Gertrude Jekyll' 1.5L
- Feature cluster (5No. plants per cluster)**
Planted at 0.5m centres
Cynara cardunculus 2L
- Ornamental hedge planting**
Planted in a double staggered row at 500mm spacings
Fagus sylvatica (feathered) 120/150cm



Location Plan Scale 1:10,000



Rev	Note	Date
P1	For Planning	25.05.2018

Greenhalgh

Landscape Architecture

Thoulstone Eco Leisure Proposal

Planting Plan - Sheet 2 of 11

077-202 P1

Date 16.05.2018
Scale 1:250@A1