



**KEY:**

- Proposed contour
- Existing tree to be retained

**Proposed trees**

- Legacy trees
  - Clb *Carpinus betulus* 20-25cm girth, c/s at 2.0m high
  - FsP *Fagus sylvatica* 'Purpurea' 20-25cm girth, c/s at 2.0m high
  - Ps *Pinus sylvestris* 20-25cm girth, c/s at 2.0m high
  - Qr *Quercus robur* 20-25cm girth, c/s at 2.0m high
- Wetland trees
  - Ag *Alnus glutinosa* 18-20cm girth, c/s at 1.8m high
  - Pn *Populus nigra* 16-18cm girth, c/s at 1.8m high
  - Pt *Populus tremula* 16-18cm girth, c/s at 1.8m high
  - Sa *Salix alba* 18-20cm girth, c/s at 1.8m high
- Infrastructure trees
  - Ac *Acer campestre* 20-25cm girth, c/s height to suit location (min. 2.2m high near roads)
  - MT *Malus 'Tschonoskii'* 20-25cm girth, c/s height to suit location (min. 2.2m high near roads)
  - Sau *Sorbus aucuparia* 18-20cm girth, c/s height to suit location (min. 2.2m high near roads)
  - Te *Tilia x europaea* 18-20cm girth, c/s height to suit location (min. 2.2m high near roads)
- Multi-stemmed trees
  - Al *Amelanchier lamarckii* 2.0-2.5m high, m/s
  - Bn *Betula nigra* 3.0-3.5m high, m/s
  - Ca *Corylus avellana* 3.0-3.5m high, m/s
  - Prs *Prunus serotina* 2.0-2.5m high, m/s
- Communal fruit trees
  - MdBb *Malus domestica* 'Bedwyn Beauty' † standard, 4.0-5.5m high
  - MdBs *Malus domestica* 'Burr's Seedling' † standard, 4.0-5.5m high
  - MdDF *Malus domestica* 'Dredge's Fame' † standard, 4.0-5.5m high
  - MdR *Malus domestica* 'Roundway Magnum Bonum' † standard, 4.0-5.5m high

- Existing woodland to be retained
- Native woodland planting  
70% tree species, 30% shrub species

- Planted at a density of 1No. per m<sup>2</sup>, in groups of 3 or 5No. by species
- Trees:**
- 10% *Acer campestre* 120/150cm
  - 10% *Alnus glutinosa* 60/90cm
  - 5% *Betula pendula* 120/150cm
  - 5% *Crataegus monogyna* 90/120cm
  - 10% *Fagus sylvatica* 120/150cm
  - 5% *Prunus avium* 60/90cm
  - 5% *Prunus padus* 120/150cm
  - 20% *Quercus robur* 120/150cm
- Shrubs:**
- 5% *Ilex aquifolium* 3L
  - 4% *Ligustrum vulgare* 60/90cm
  - 5% *Malus sylvestris* 60/90cm
  - 2% *Prunus spinosa* 60/90cm
  - 4% *Rosa arvensis* 60/90cm
  - 6% *Taxus baccata* 5L
  - 4% *Viburnum opulus* 60/90cm
- Bulbs**  
Planted in groups of 50No.
- Galanthus nivalis* 15cm high, 4/5cm bulb size
  - Narcissus pseudonarcissus* 40cm high, 12/14cm bulb size

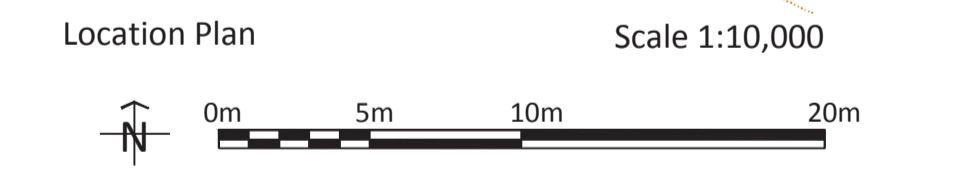
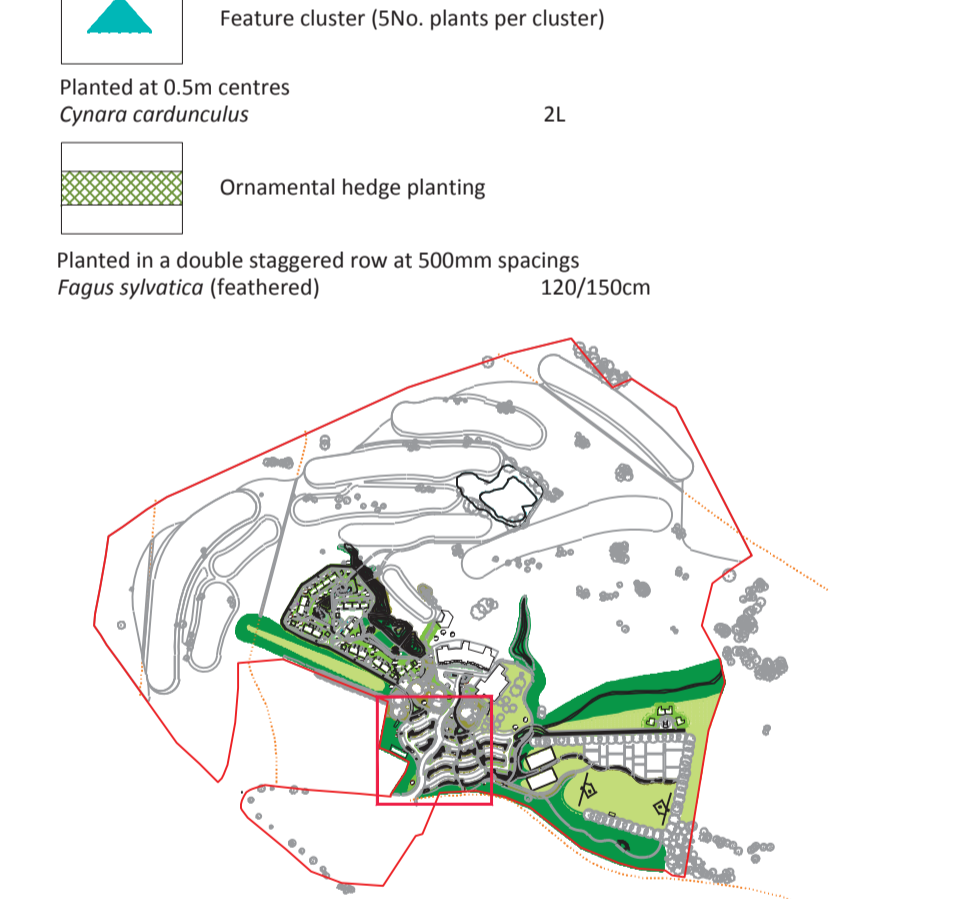
- Native woodland edge planting  
30% tree species, 70% shrub species
- Planted at a density of 1No. per m<sup>2</sup>, in groups of 3 or 5No. by species
- Trees:**
- 6% *Acer campestre* 90/120cm
  - 9% *Corylus avellana* 120/150cm
  - 6% *Ilex aquifolium* 3L
  - 9% *Quercus robur* 90/120cm
- Shrubs:**
- 12% *Crataegus monogyna* 90/120cm
  - 8% *Evonymus europaeus* 120/150cm
  - 8% *Ligustrum vulgare* 60/90cm
  - 8% *Lonicera periclymenum* 60/90cm
  - 12% *Rosa arvensis* 60/90cm
  - 10% *Sambucus nigra* 3L
  - 12% *Viburnum opulus* 60/90cm
- Bulbs**  
Planted in groups of 50No.
- Galanthus nivalis* 15cm high, 4/5cm bulb size
  - Narcissus pseudonarcissus* 40cm high, 12/14cm bulb size

- Native woodland ground cover
- Planted at a density of 1No. per m<sup>2</sup>, in groups of 9-15No. by species:
- 20% *Asplenium scolopendrium* 3L
  - 20% *Dryopteris filix-mas* 2L
  - 15% *Liriope muscari* 1.5L
  - 10% *Luzula sylvatica* 1.5L
  - 20% *Salvia officinalis* 1.5L
  - 15% *Vinca minor* 1.5L
- Bulbs**  
Planted in groups of 50No. towards front of beds
- Galanthus nivalis* 15cm high, 4/5cm bulb size
  - Narcissus pseudonarcissus* 40cm high, 12/14cm bulb size

- Existing amenity grass to be retained

- Amenity grass  
Rolawn Medallion or similar equal and approved
- Wildflower grassland  
Emorsgate EM4
- Marginal planting  
Planted at a density of 1No. per m<sup>2</sup>, in groups of 7 or 9No. by species
  - Carex riparia* P9
  - Caltha palustris* P9
  - Iris pseudacorus* P9
  - Iris versicolor* P9
  - Mentha aquatica* P9
  - Myosotis scorpioides* P9
  - Lychnis flas-cuculi* 'White Robin' P9
  - Lythrum salicaria* P9
  - Ranunculus flammula* P9
- Aquatic planting  
Planted at a density of 1No. per m<sup>2</sup>, in groups of 7 or 9No. by species
  - Seeded with Emorsgate EP1 pond edge mixture at a rate of 4gms per m<sup>2</sup>
    - Menyanthes trifoliata* P9
    - Myosotis scorpioides* P9
    - Potamogeton polygonifolius* P9
    - Sagittaria sagittifolia* P9
- Ornamental planting in gravel beds  
Planted at a density of 1No. per m<sup>2</sup>, in groups of 3 or 5No. by species
  - 20% *Anethum graveolens* 2L
  - 10% *Carex riparia* 1L
  - 15% *Foeniculum vulgare* 2L
  - 10% *Iris pseudacorus* 1L
  - 10% *Iris versicolor* 1L
  - 15% *Luzula sylvatica* 1.5L
  - 10% *Lychnis flas-cuculi* 2L
  - 10% *Persicaria bistorta* 2L
- Ornamental planting  
Planted at a density of 4No. per m<sup>2</sup>, in groups of 3 or 5No. by species
  - Type A: with edibles
    - 10% *Foeniculum vulgare* 2L
    - 15% *Miscanthus sinensis* 'Ferner Osten' 2L
    - 15% *Pachysandra terminalis* 'Green Carpet' 1.5L
    - 15% *Ribes rubrum* 'Jonkheer van Tets' 3L
    - 15% *Rosmarinus officinalis* 3L
    - 10% *Rumex sanguineus* 2L
    - 10% *Salvia nemorosa* 'Caradonna' 3L
    - 5% *Thymus citriodorus* 2L
    - 5% *Thymus 'Fragrantissimus'* 2L
  - Type B (without edibles)
    - 5% *Astilbe chinensis* 2L
    - 10% *Echinacea purpurea* 'Purple Emperor' 2L
    - 10% *Eupatorium purpureum* 2L
    - 5% *Miscanthus sinensis* 'Ferner Osten' 2L
    - 10% *Pennisetum alopecuroides* 'Hamel' 2L
    - 10% *Philomis russeliana* 2L
    - 10% *Rosmarinus officinalis* 3L
    - 5% *Rudbeckia hirta* 'Indian Summer' 2L
    - 10% *Sanguisorba officinalis* 3L
    - 15% *Stipa tenuissima* 1.5L
    - 10% *Vinca minor* 'Gertrude Jekyll' 1.5L

- Feature cluster (5No. plants per cluster)  
Planted at 0.5m centres  
*Cynara cardunculus* 2L
- Ornamental hedge planting  
Planted in a double staggered row at 500mm spacings  
*Fagus sylvatica* (feathered) 120/150cm



Rev	Note	Date
P1	For Planning	25.05.2018

# Greenhalgh

Landscape Architecture

## Thoulstone Eco Leisure Proposal

Planting Plan - Sheet 4 of 11

077-204 P1

Date 16.05.2018

Scale 1:250@A1