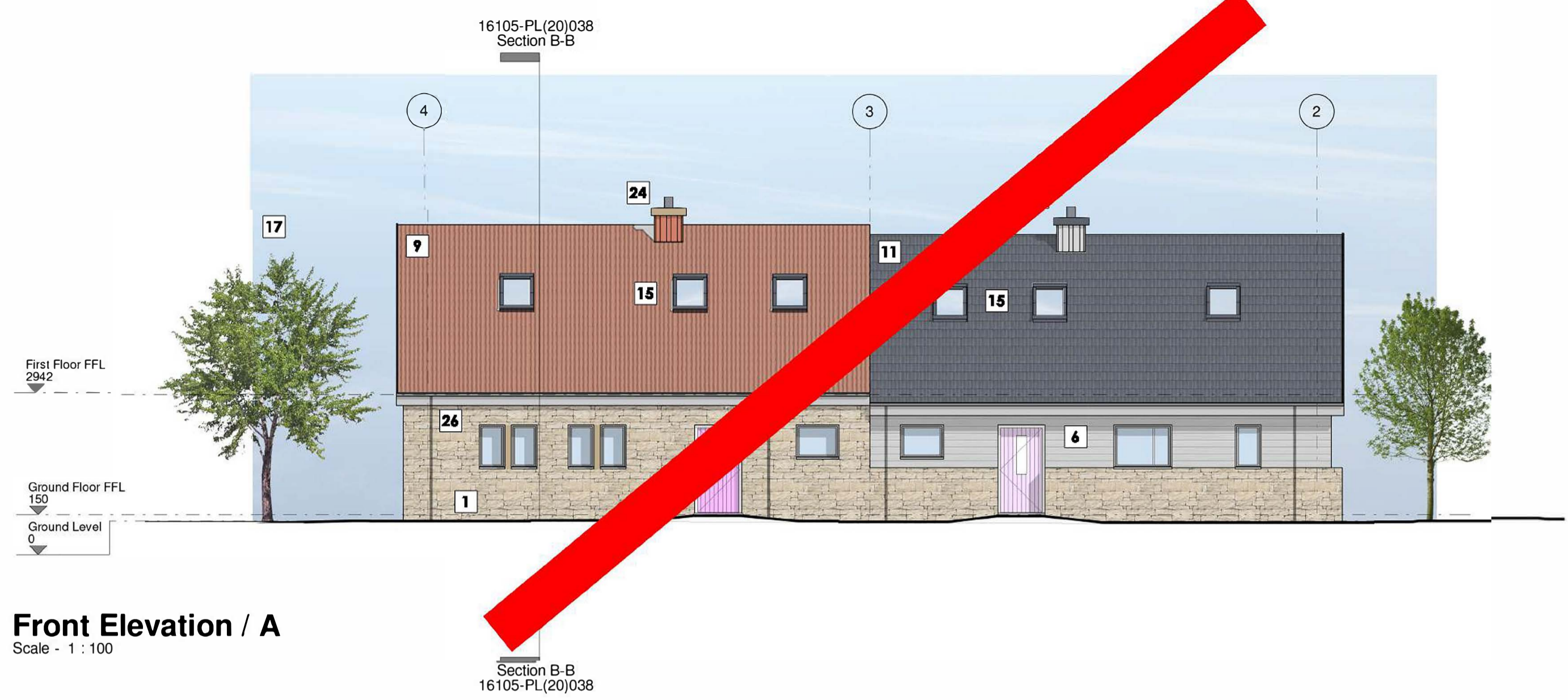


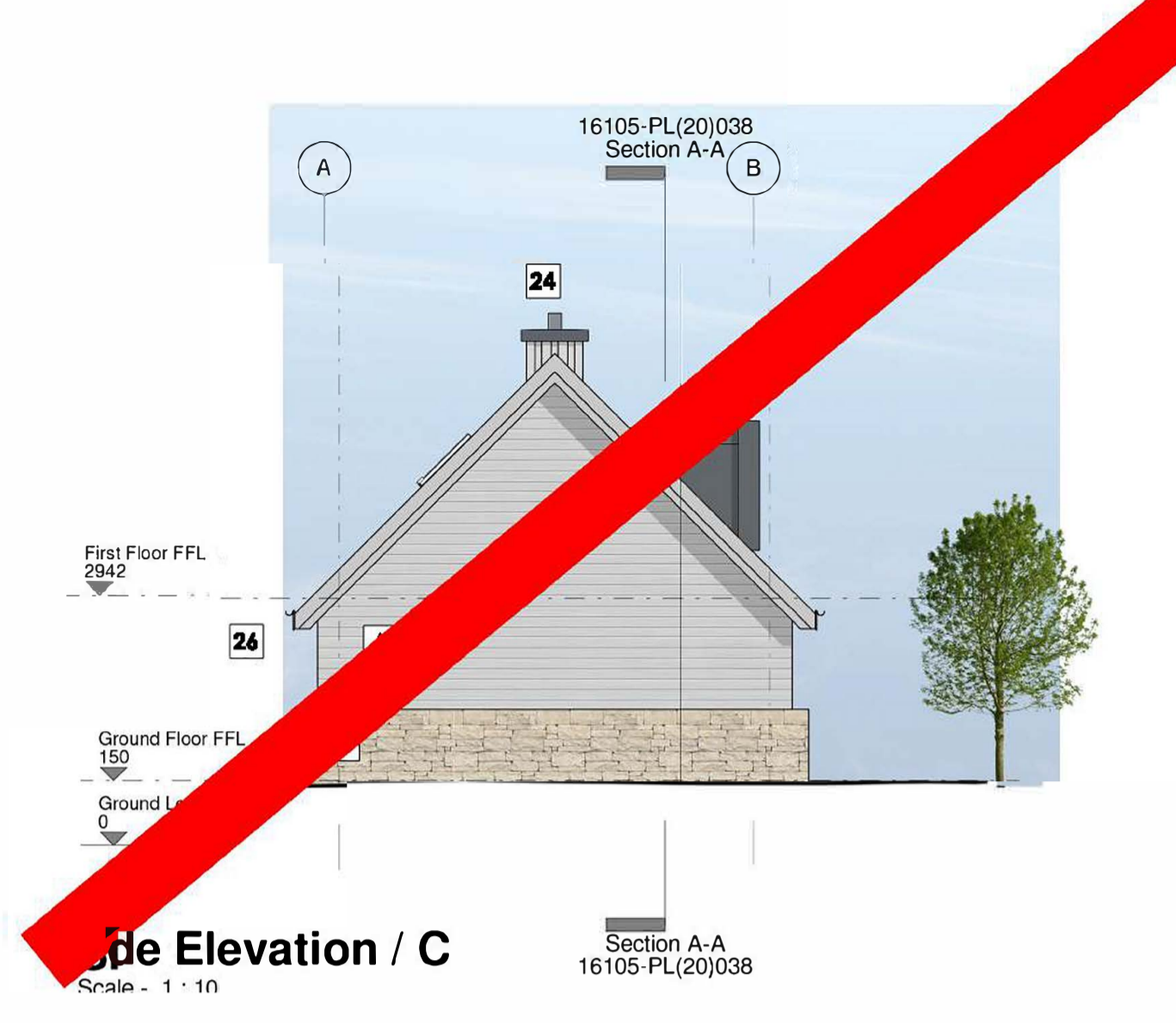
All levels and dimensions to be checked on site prior to construction / fabrication; report discrepancies immediately.

Do not scale dimensions from this drawings. This drawing is copyright protected.

REVISION
A - 15/11/18 Staff Accommodation Block 2 deleted. KW JB



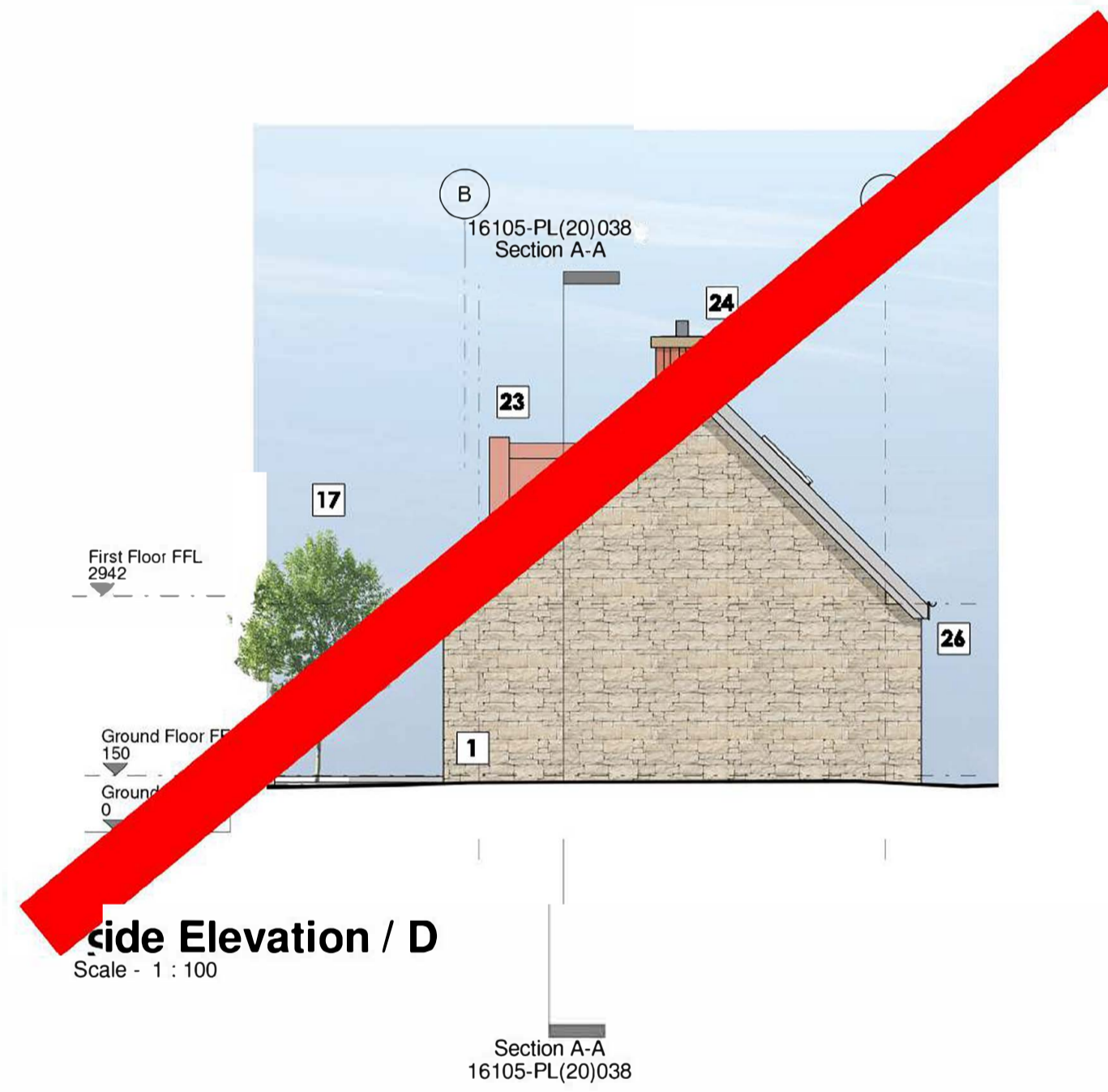
Front Elevation / A
 Scale - 1 : 100



Side Elevation / C
 Scale - 1 : 100



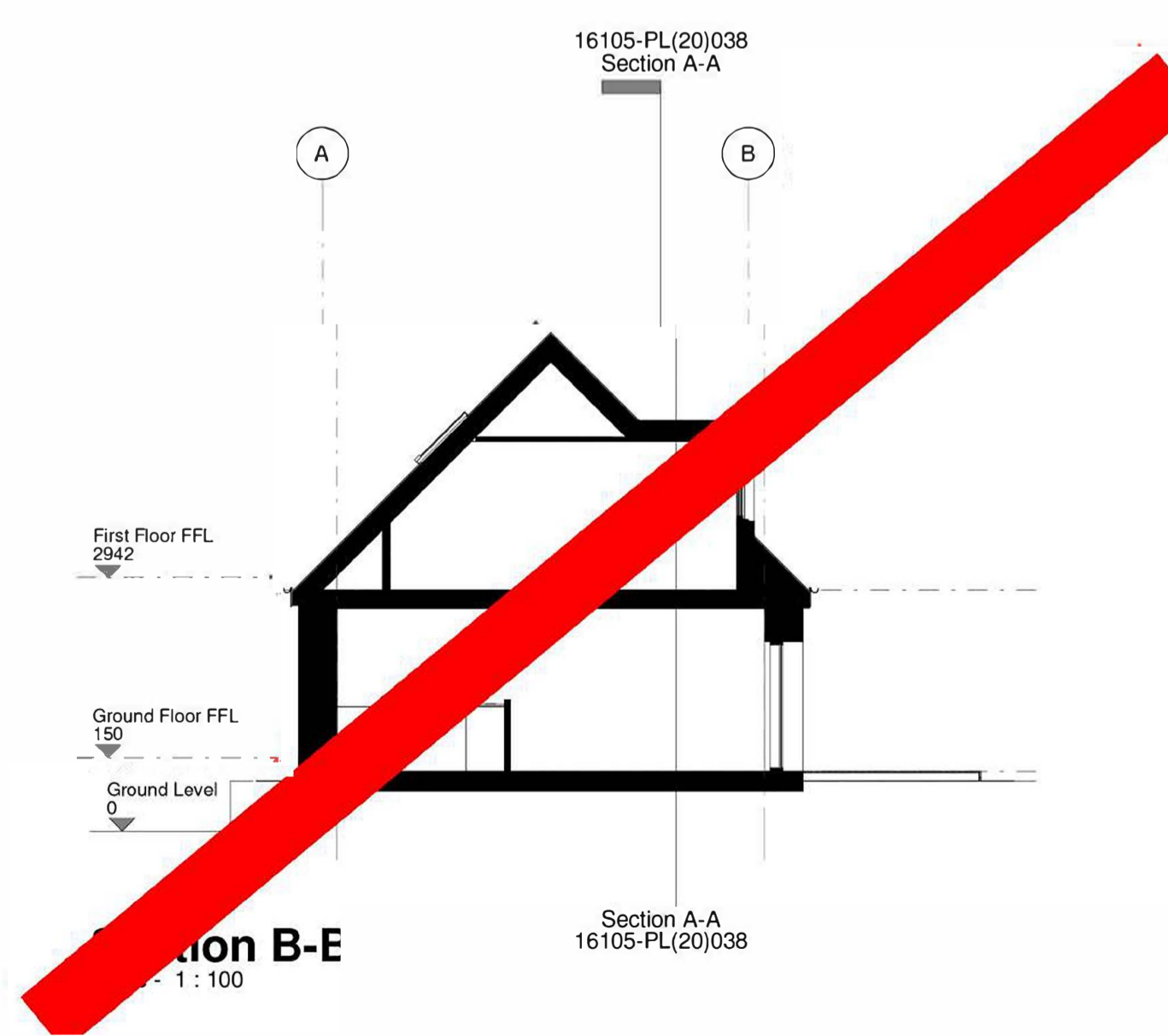
Rear Elevation / B
 Scale - 1 : 100



Side Elevation / D
 Scale - 1 : 100



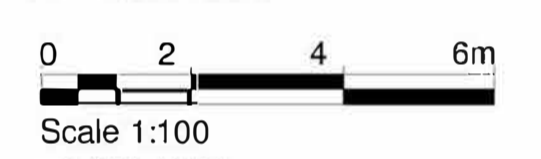
Section A-A
 Scale - 1 : 100



Section B-E
 Scale - 1 : 100

Thoulstone Eco – Leisure Proposal

- Materials Key :**
- 1 Natural Stone Cladding
 - 2 Buff Brick Finish
 - 3 Red Brick Finish
 - 4 Red Brick Soldier Course Above Openings
 - 5 Vertical Timber Cladding
 - 6 Horizontal Timber Cladding
 - 7 Metal Standing Seam Vertical Cladding
 - 8 Metal Standing Seam Roof
 - 9 Red Tile Roof Finish
 - 10 Grey Tile Roof Finish
 - 11 Slate Roof Finish
 - 12 Photo Voltaic Panels
 - 13 Ventilation Chimney Stack
 - 14 Grey Double Glazed Window Units
 - 15 Rooflight Grey Finish
 - 16 Timber External Doors
 - 17 New Soft Landscaping (Refer to landscape architects proposals for details)
 - 18 Grey Single Ply Membrane Roof
 - 19 Horizontal Timber Louvres
 - 20 Steel Louvre Support Frame
 - 21 Horizontal Timber Louvres to Facilitate ASHP.
 - 22 Vertical timber Louvres to Facilitate ASHP.
 - 23 Metal Clad Dormer (Colour to match adjacent roof finish)
 - 24 Chimney / Flue Finish To Match Adjacent Roof Finish
 - 25 Metal Balcony With Steel Balustrade & Timber Handrail.
 - 26 Grey Rainwater Down Pipes With Matching Gutter Sections.
 - 27 Stone Mullion.



Key Plan - NTS

DATE • 25/05/18 DRAWN • LC
 SCALE • 1:100 @ A1 CHECKED • JB

PROJECT
Thoulstone Eco Leisure Proposal

DRAWING
Staff Accommodation Block 2 Elevations and Sections



12 CARPENTER STREET • PERTH • PH1 5LZ
 01738 230360
 WWW.TRAILARCHITECTS.CO.UK

DRAWING No. **16105-PL(20)038** REV **A**